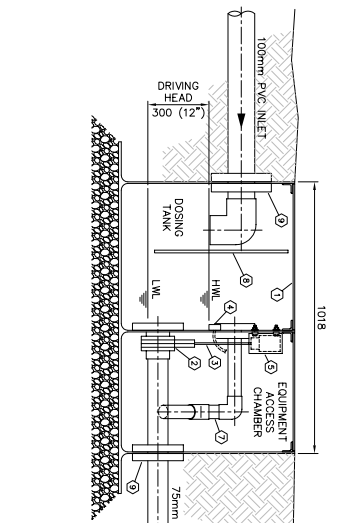
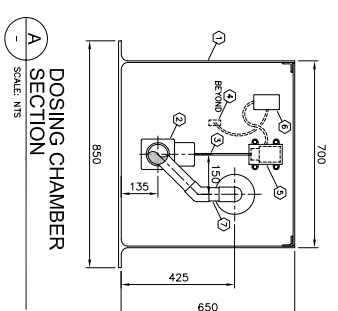


**DOSING CHAMBER EQUIPMENT LIST**

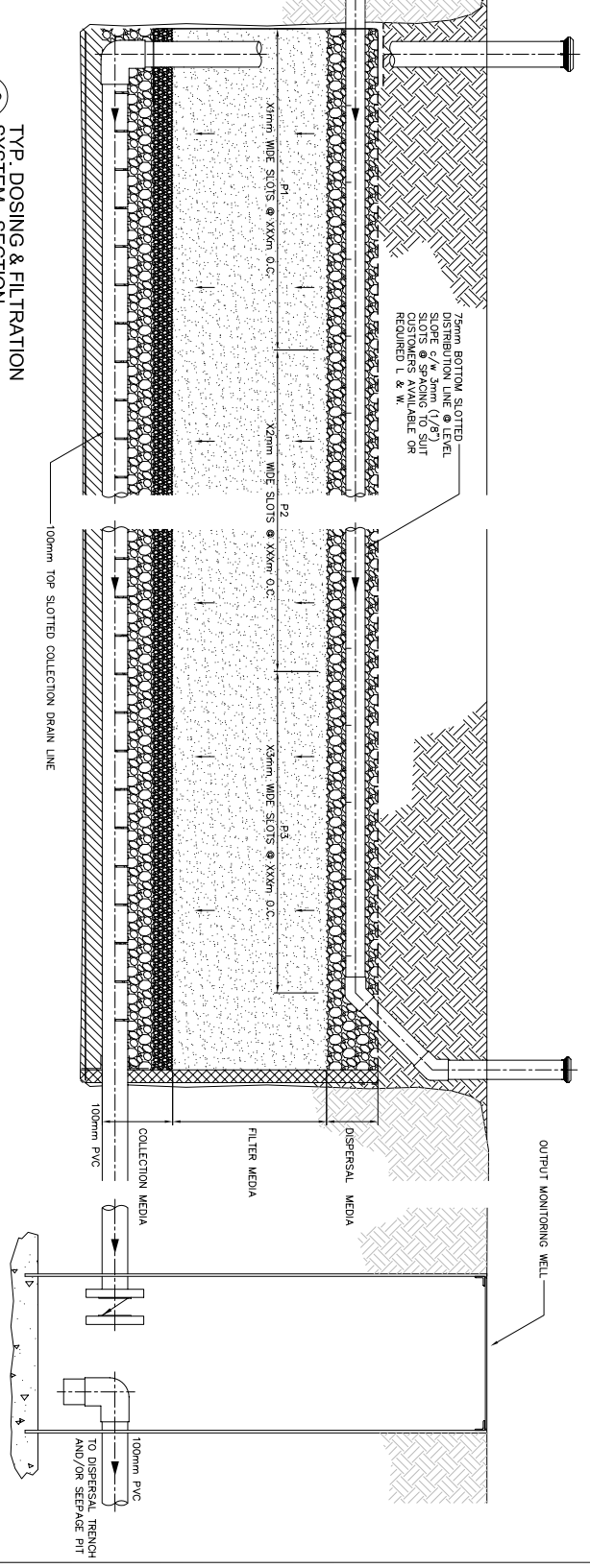
① DENOTES NOTE NUMBER

1. 1018 x 700 x 650mm DEEP DOSING CHAMBER, DOSING VOLUME IS 112L (259gal) AND DRIVING HEAD IS 300mm (1'2").
2. 75mm (3") GATE VALVE.
3. ACTUATING ROD FROM GATE VALVE UP THROUGH ACTUATOR HOUSING AND FASTENED TO ACTUATOR.
4. ELECTRONIC LIQUID LEVEL SENSOR.
5. ELECTRO-MAGNETIC LINEAR ACTUATOR ENCASED IN SEALED PVC PIPE.
6. POWER CONTROLLER, COUNTER AND TIMER.
7. 50mm (2") OVERFLOW PIPE.
8. SPLASH WALL TO MINIMIZE DISTURBANCE TO LIQUID LEVEL SENSOR.
9. FLANGED CONNECTION FROM DOSING CHAMBER INLET AND DISCHARGE TO EXTERIOR PIPE c/w RUBBER GASKETS INSIDE AND OUT.



**1 TYP. DOSING & FILTRATION SYSTEM - PLAN**

SCALE: NTS  
SEE SITE SPECIFIC WORKING DRAWINGS FOR DETAILS



**2 TYP. DOSING & FILTRATION SYSTEM - SECTION**

SCALE: NTS  
SEE SITE SPECIFIC WORKING DRAWINGS FOR DETAILS

THIS DESIGN AND THE DETAILS CONTAINED THEREIN ARE THE PROPERTY OF DEXTRAS ENVIRONMENTAL ENGINEERING LP. UNAUTHORIZED USE OR REPRODUCTION IS STRICTLY PROHIBITED.

ENGINEER		M. Z.		SEAL					
<b>DEXTRAS</b> Environmental Engineering LP		DESIGNED				<b>SEWAGE TREATMENT DOSING SYSTEM</b> PAT. PEND. DEXTRAS ENVIRONMENTAL ENGINEERING LP Residential Sewage Treatment Type 2512 STANDARD GENERAL ARRANGEMENT DRAWING			
CLIENT		CHECKED							
		APPROVED							
		FIELD BOOK							
		SCALES		HORZ. NTS		DATE		June 24, 2008	
		VERT. NTS				SHEET		1 of 1	
No.		DATE		ISSUE/REVISION		DWG. No.		STDs-100	